

Parkheath

Sold on Service

Belsize Avenue NW3
£525,000



Delightful 1 bed top floor flat
Communal Gardens
Bright and airy throughout
Modern open plan kitchen
3 piece bathroom with window

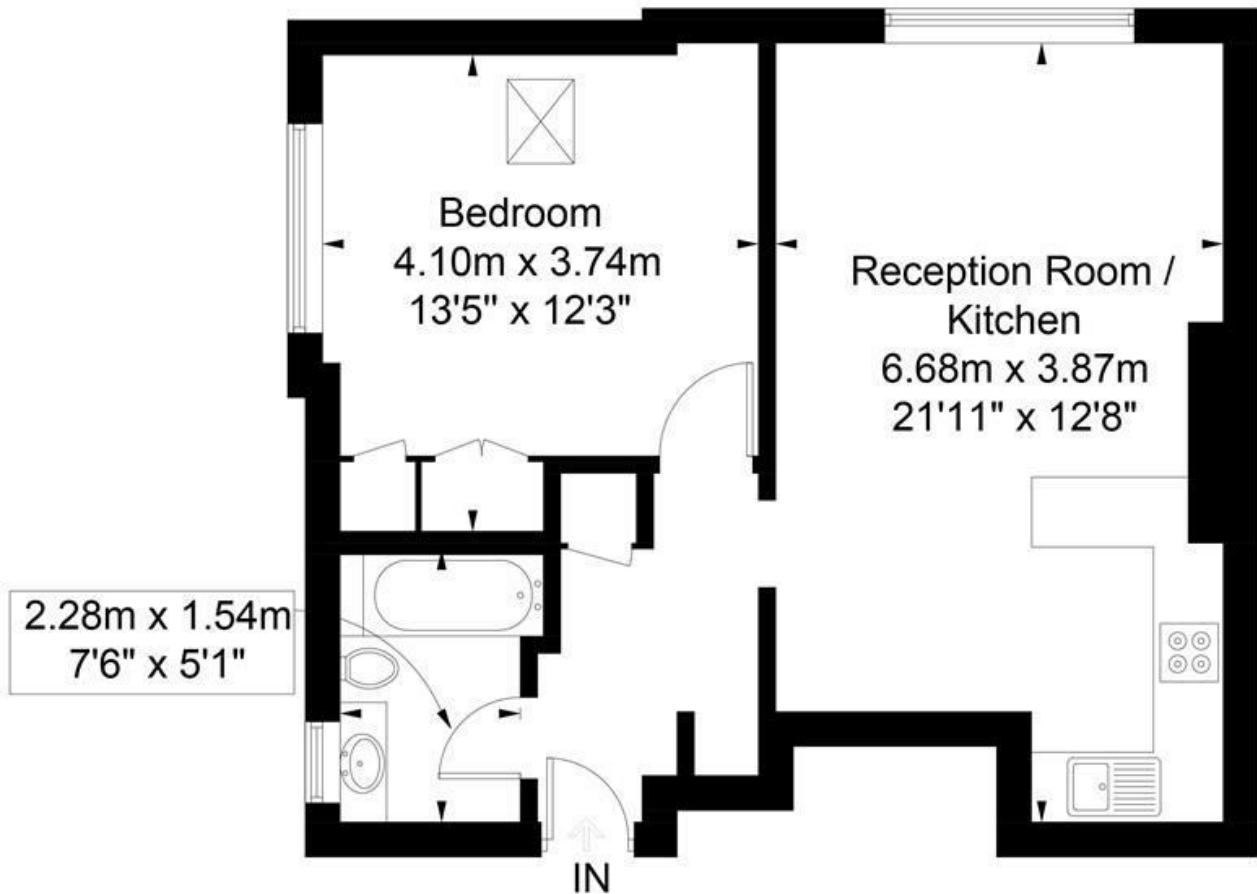
Semi-detached red brick period house
522 sq ft/48.5 sq m
21' open plan reception
Spacious 13' bedroom with wardrobes
Chain free

Belsize Park Office 020 7431 3104

Belsize Avenue



Approximate Gross Internal Area = 48.5 sq m / 522 sq ft



Third Floor

Illustration for identification purposes only, measurements are approximate,
not to scale. FloorplansUsketch.com © 2018 (ID417392)
ELLIE CLAIRE PHOTOGRAPHY LTD

The particulars do not constitute part of an offer or contract. The particulars, including text, photographs and plans, are for the guidance only of prospective purchasers/tenants and must not be relied upon as statements of fact. The descriptions provided therein represent the opinion of the author and whilst given in good faith should not be construed as statements of fact. Nothing in these particulars shall be deemed a statement that the property is in good condition or otherwise or that any services or facilities are in good working order. All measurements are approximate